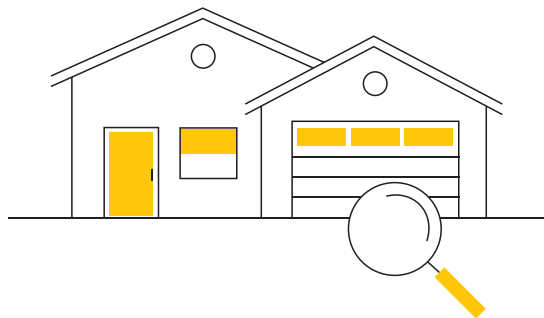


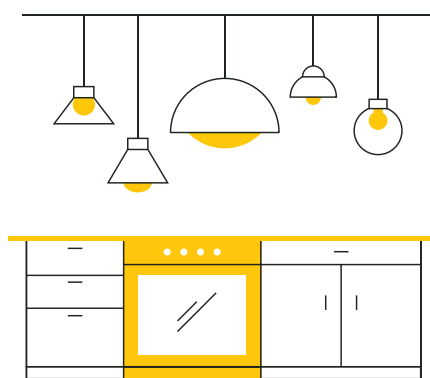
3 Select your exterior style.

The outside of your home should make you just as happy as the inside, so we offer a variety of exterior styles to choose from. Whether your preference is traditional or modern, architectural designs in your community may include Farmhouse, Colonial, Spanish, Mediterranean, Craftsman, Prairie, and more.



4 Personalize your home.

Come inside the KB Home Design Studio and discover all the things we offer to personalize your new home. Partner with your dedicated design consultant to choose flooring, countertops, cabinets, lighting, appliances and more. With a variety of options, many at no additional cost, from trusted brands like Whirlpool®, Kohler® and Sherwin-Williams®, you can create your home at a price that fits your style and budget.



An energy-efficient home for you.



Our homes are designed to be ENERGY STAR® certified, delivering energy savings that help lower the cost of ownership. And as a leader in energy efficiency, we use the Energy Savings Comparison® to demonstrate the lower monthly cost of homeownership.

We'll find the home for you.



KB Home Finding Services simplifies the search.

Which new KB Home community is right for you? Our team of specialists will help you find a great community in a location where you want to live.



Schedule an appointment with an online sales counselor today at 281-668-3975.

888-KB-HOMES | kbhome.com

©2025 KB Home (KBH). ENERGY STAR®, the ENERGY STAR mark, Whirlpool®, Kohler® and Sherwin-Williams® are all registered U.S. trademarks. KB Home reserves the right to change or discontinue features, options, products, materials and suppliers at any time without notice. Nothing herein shall be deemed an irrevocable guarantee or commitment that the home will be built with specific products or with products from any specific manufacturers. Placement on interest list does not guarantee qualification for a loan, lot location or purchase of a KB home. Plans, pricing, financing, terms, availability and specifications subject to change/prior sale without notice and may vary by neighborhood, lot location and home series. Buyer responsible for all taxes, insurance and other fees. Sq. footage is approximate. Photos may depict upgraded landscaping/options and display decorator items/furnishings not available for purchase, and may not represent lowest-priced homes. Map not to scale. See sales counselor for details. HOU-1139559



We see

dreams



We see

style



We see

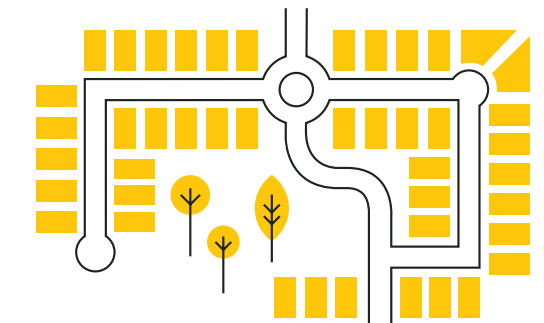
you



A KB home is uniquely built just for you.

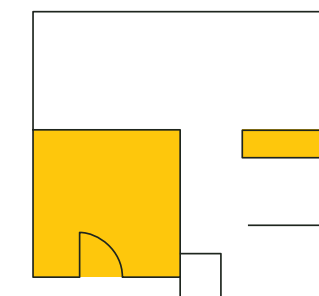
1 Select a homesite.

Choose where in the community you want to live.



2 Choose a floor plan.

Our innovative design starts with thoroughly researching how people live day-to-day in order to create new homes they love. Select the open floor plan that fits your lifestyle, with indoor/outdoor living areas that seamlessly flow together, plus extra storage and generous counter space.



KB Home Communities Guide

Fall 2025
Houston Area



Built on Relationships®

Arcola

- 1 Glendale Lakes North** Model Home Now Open
1,242-2,509 sq. ft., 3-5 bdrms., 2-3.5 baths
6914 Segunda Ln., Arcola, TX 77583

Beasley

- 2 Saddlebrook Preserve** Coming Soon
1,491-2,783 sq. ft., 3-5 bdrms., 2-3.5 baths

Saddlebrook Trails

Coming Soon
1,043-2,246 sq. ft., 2-4 bdrms., 2-2.5 baths
Beasley West End Rd. and Hwy. 90, Beasley, TX 77417

Cypress

- 3 Marvida Trails South**
1,604-2,471 sq. ft., 3-5 bdrms., 2-3.5 baths
21115 Montego Bay Dr., Cypress, TX 77433

Fresno

- 4 Olympia Falls**
1,042-2,844 sq. ft., 2-5 bdrms., 2-3.5 baths
2111 Ardani Ln., Fresno, TX 77545

Hitchcock

- 5 Sunset Grove South** Now Selling
1,042-2,495 sq. ft., 2-4 bdrms., 2-2.5 baths
5626 Greater Nighthawk Rd., Hitchcock, TX 77563

Hockley

- 6 Bauer Meadows**
1,042-2,245 sq. ft., 2-4 bdrms., 2-2.5 baths
22855 Wolfshire Way, Hockley, TX 77447

Katy

- 7 Sunterra North**
1,416-2,538 sq. ft., 3-5 bdrms., 2-3.5 baths
27134 Talora Lake Dr., Katy, TX 77493

Magnolia

- 8 Mustang Ridge**
1,042-2,526 sq. ft., 2-4 bdrms., 2-3.5 baths
518 Sabino Sky Ct., Magnolia, TX 77354

Manvel

- 9 Avellino** Now Selling
1,477-2,980 sq. ft., 3-5 bdrms., 2-4.5 baths
32 Rodeo Dr., Manvel, TX 77578

New Caney

- 10 Madera Preserve** Coming Soon
1,675-2,783 sq. ft., 3-5 bdrms., 2-3.5 baths

Madera Trails

Coming Soon
1,043-2,246 sq. ft., 2-4 bdrms., 2-2.5 baths
Hwy. 99 and Willaby Rd., New Caney, TX 77357

Rosenberg

- 11 Davina** Coming Soon
1,527-3,171 sq. ft., 3-5 bdrms., 2-3 baths
J. Meyer Rd. and Hwy. 36, Rosenberg, TX 77471

Spring

- 12 Breckenridge Forest**
1,477-2,752 sq. ft., 3-5 bdrms., 2-3 baths
25610 White Vortex Dr., Spring, TX 77373

Texas City

- 13 Vida Costera**
1,042-2,596 sq. ft., 2-4 bdrms., 2-3.5 baths
1906 Becaccino Trl., Texas City, TX 77591

Tomball

- 14 Oakwood Preserve**
1,675-2,980 sq. ft., 3-4 bdrms., 2-3.5 baths
18307 Walnut Canopy Way, Tomball, TX 77377

Oakwood Trails

1,042-2,245 sq. ft., 2-4 bdrms., 2-2.5 baths
18327 Walnut Canopy Way, Tomball, TX 77377

Willis

- 15 Grace Landing** Coming Soon
1,042-1,780 sq. ft., 2-4 bdrms., 2-2.5 baths
10180 Maple Cove Ln., Willis, TX 77378

★ Houston Design Studio
Hours: Daily, 9am-6pm (By Appointment)
11314 Richmond Ave., Houston, TX 77082
281-668-3940