



SANDLIN
HOMES



Timberbrook

Justin, TX

1016 Mill Ridge Drive

2,416

SQUARE FEET

4

BEDROOMS

2.5

BATHROOMS

2

GARAGE

\$484,900

Was \$549,900

Westwood

- Barrel Ceiling Entryway
- Large Kitchen Island
- Oven Tower
- Beamed Ceiling
- Large Walk-In Closet
- Freestanding Bathtub
- Large Covered Patio

Andy Schei

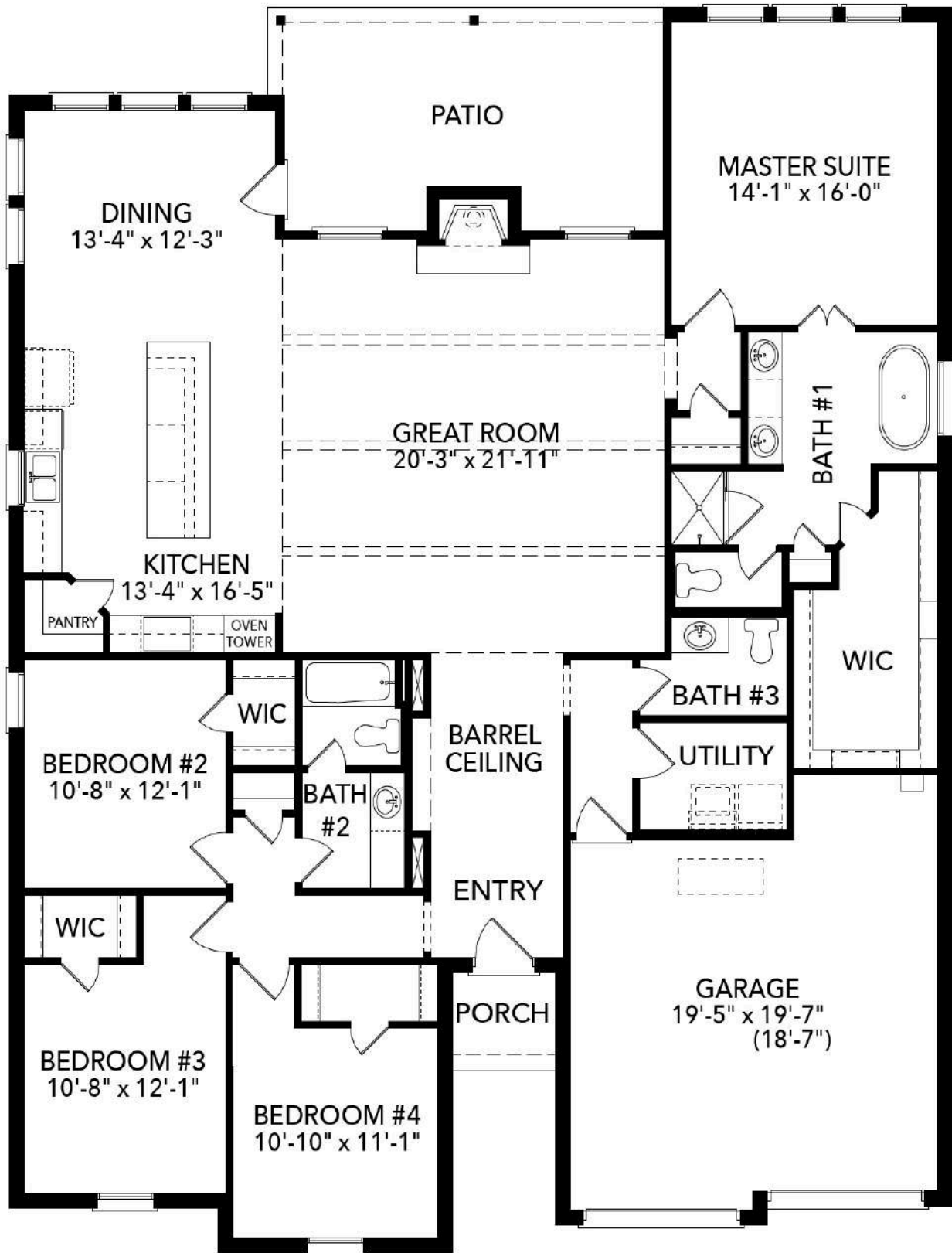
817-341-0101

AndyS@SandlinHomes.com

1012 Longbow Trail
Justin, TX 76247

www.SandlinHomes.com





First Floor